



MBS310

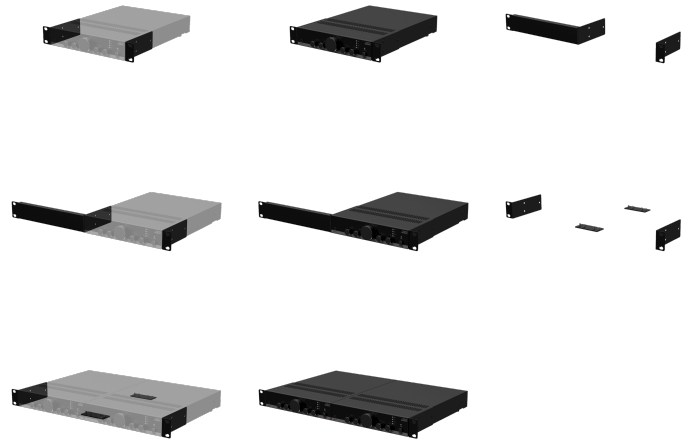
Rack mounting set for half rackspace 1u enclosures

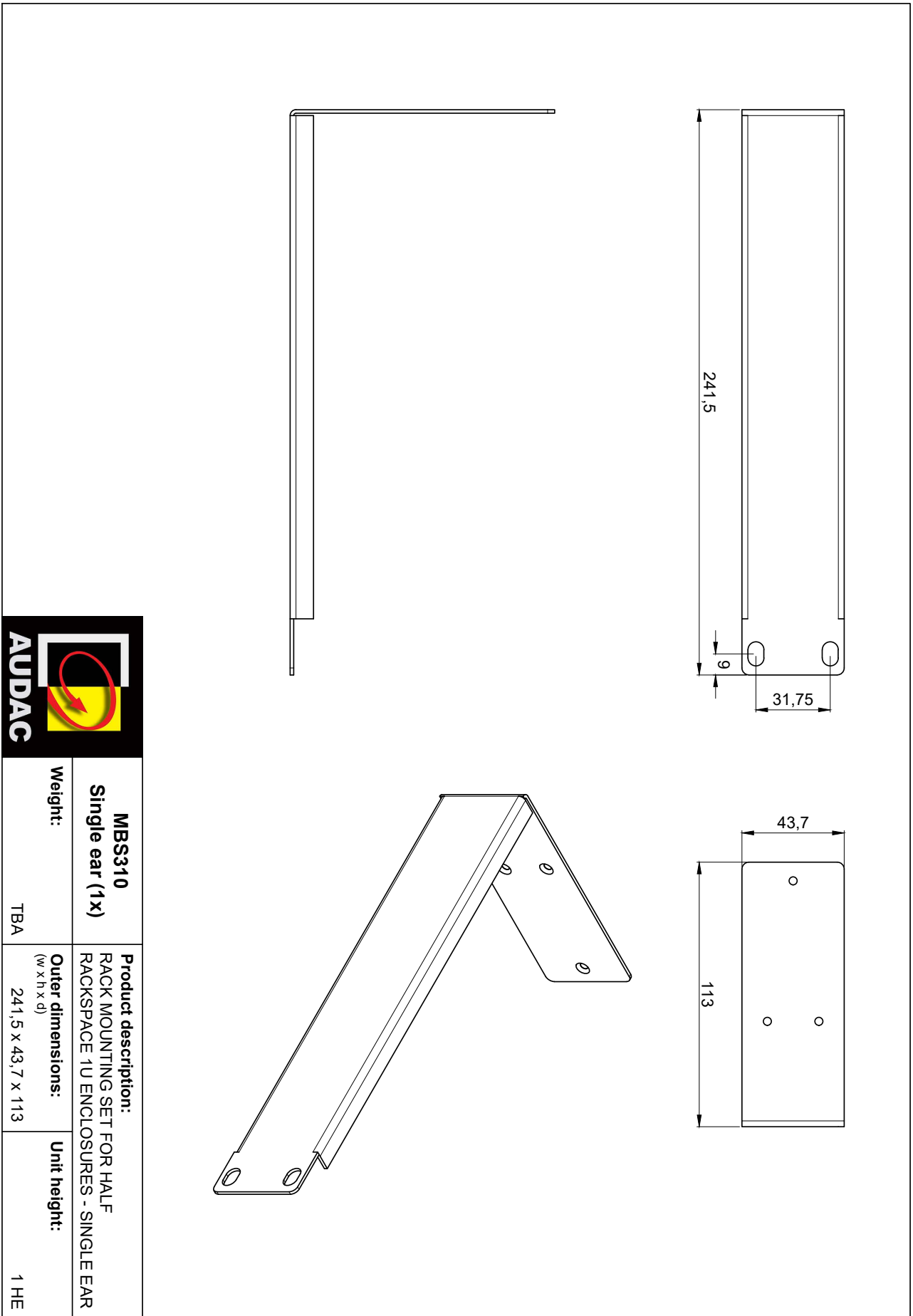
The MBS310 rack mounting set is designed to safely and effectively mount half rackspace devices into 19" or 10.5" racks. The following configurations are possible with this set:

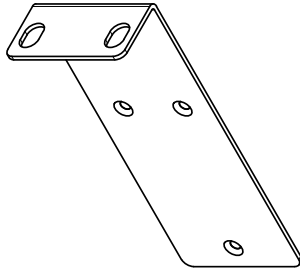
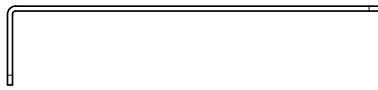
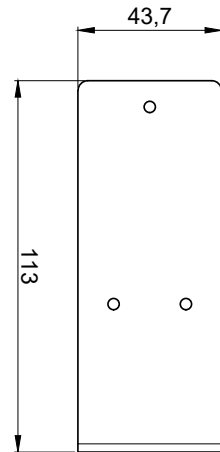
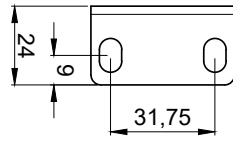
- One half rackspace device in to a 19" rack (1 HE)
- Two half rackspace devices in to a 19" rack (1 HE)
- One half rackspace device in to a 10.5" rack (1 HE)

The set contains:

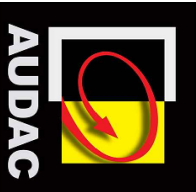
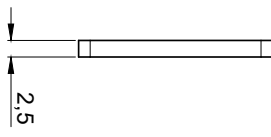
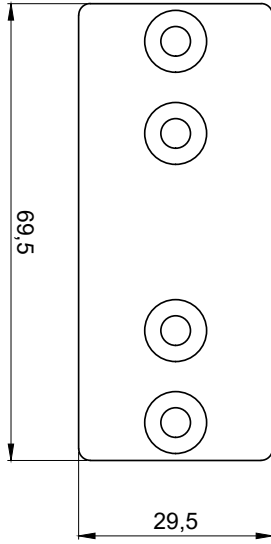
- 1 x single mounting ear
- 2 x double mounting ears
- 2 x couplers
- 8 x screws M4 x 6mm







MBS310 Double ear (2x)	Product description: RACK MOUNTING SET FOR HALF RACKSPACE 1U ENCLOSURES - DOUBLE EAR	Unit height: 1 HE
Weight: TBA	Outer dimensions: <small>(w x h x d)</small> 24 x 43,7 x 113	



MBS310 Coupler (2x)	Product description: RACK MOUNTING SET FOR HALF RACKSPACE 1U ENCLOSURES - COUPLER	Weight: TBA	Outer dimensions: <small>(w x h x d)</small> 69,5 x 29,5 x 2,5	Unit height: N/A