



**NDI® DUAL LENS  
POWERED  
TRACKING**

**AVer TR535N**








NDI® Dual Lens Auto Tracking Camera



# AVer TR535N

NDI® Dual Lens Auto Tracking Camera

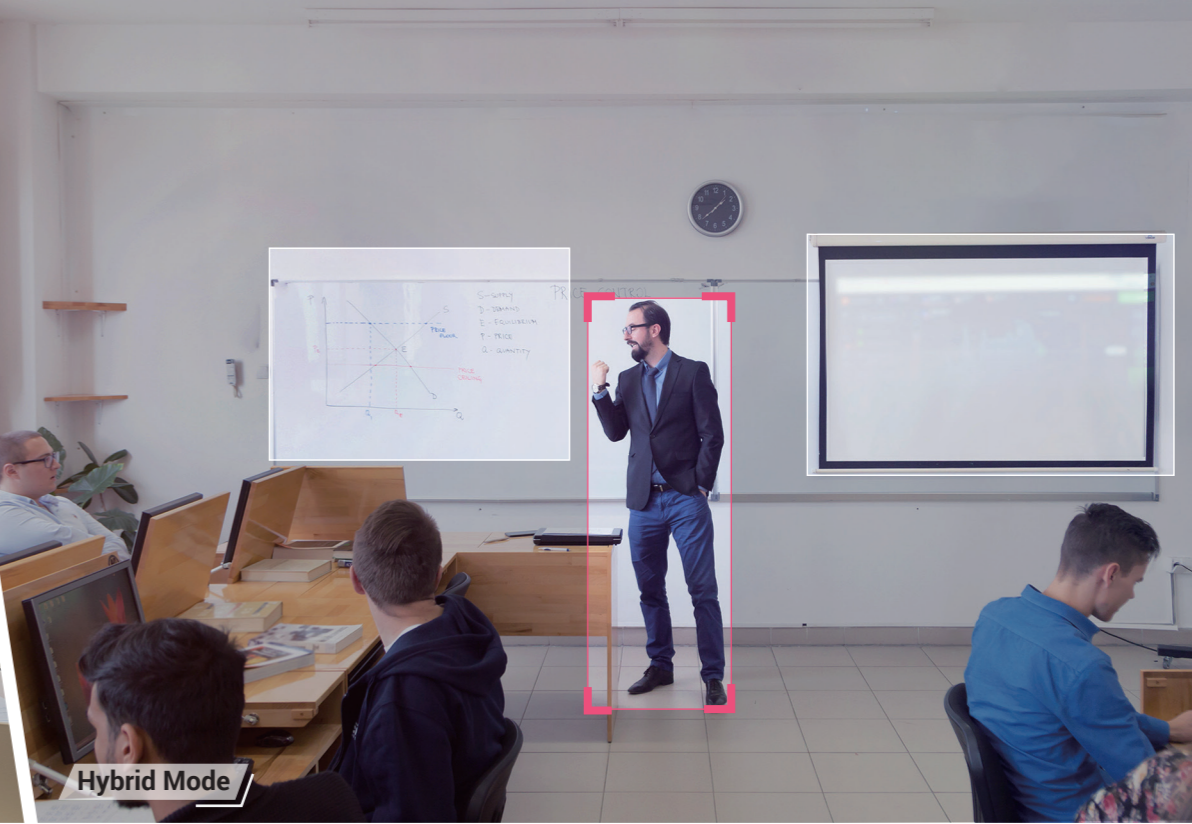
Enter the future of streaming excellence with AVer's TR535N, featuring NDI® High Bandwidth integration and AI auto tracking capabilities for diverse applications. The TR535N offers a stellar 30X zoom and a sweeping wide-angle view. The wide-angle lens captures the whole scene while the 4K PTZ camera zooms in for close-ups, ensuring complete coverage. Fueled by four advanced AI-driven tracking modes, the TR535N delivers unparalleled precision for broadcasting, streaming, and recording environments.

-  NDI® High Bandwidth
-  Dual Lens Design
-  4K Ultra HD
-  30X+ Optical Zoom
-  Versatile Camera Outputs
-  4 AutoTracking Modes
-  Multi-Presenter Detection
-  PiP Mode
-  Voice Tracking\*
-  5-Year Warranty

\*Voice Tracking requires PTZ Link or MT300(N).



Zone Mode



Hybrid Mode



Presenter Mode



Segment Mode

## NDI® High Bandwidth for Ultra-low Latency

Access unparalleled streaming excellence with the TR535N's NDI® High Bandwidth technology! Experience the almost lossless compression, ultra-low latency, and pristine image quality that simplify even the most intricate setups, effortlessly redefining the landscape of modern video content sharing and production.

## Mind-Blowing 30X Optical Zoom Capability

Delve into the astounding capabilities of the TR535N's 30X optical zoom lens. This feature seamlessly operates during panning and tilting, enabling content accentuation and rapid perspective shifts. Experience dynamic, crystal-clear video feeds, courtesy of the TR535N's unmatched performance.

## Dual Lens Design

TR535N's dual lens design combines a 110° FOV wide-angle and a PTZ camera. Leverage both for superior auto tracking: the wide-angle camera identifies the whole scene, while the PTZ camera provides precise tracking, ensuring continuous focus on targets.

## Dual HDMI/USB/IP. Simple Configurations Boost Your Productivity

Activate the TR535N's 4K streaming through 2 HDMI, USB, and IP ports. A pair of HDMI outputs connect to two monitors for simultaneous display and capturing. Two separate USB streams via one USB cable to PC/laptop enable independent recording and streaming. Streamline your setup for fluid video production without tangled cables.

## AI Tracking Modes for Every Scenario

Elevate your presentations with four AI tracking modes tailored to personalized scenarios. From lectures, sports, to live performances, enjoy seamless adaptability, ensuring optimal focus and clarity for every moment and enhancing your audience's experience in extra-large spaces.

# Product Specifications

PTZ Camera		General	
Image Sensor	1/2.8" 4K Exmor CMOS	Power Requirement	AC 100 - 240V to DC 12V/5A
Effective Picture Elements	8 Megapixels	Power Consumption	29W
Output Resolutions	4K/60, 4K/59.94, 4K/50, 4K/30, 4K/29.97, 4K/25, 1080p/60, 1080p/59.94, 1080p/50, 1080p/30, 1080p/29.97, 1080p/25, 1080i/60, 1080i/59.94, 1080i/50, 720p/60, 720p/59.94, 720p/50	PoE	PoE++
		Dimensions (W x H x D)	202.5 x 250.7 x 218.5 mm
Minimum Illumination	0.5 lux (IRE50, F1.6, 30fps)	Net Weight	3.6 (±0.1) kg
S/N Ratio	≥ 50 dB	Application	Indoor
Gain	Auto, Manual	Tally Lamp	Yes
TV Line	1600 (Center)	Security	Kensington Slot
Shutter Speed	1/1 to 1/10,000 sec	Remote Control	Infrared
Exposure Control	Auto, Manual, Priority AE (Shutter, IRIS), BLC, WDR	Operating Conditions	Temperature : 0 °C to +40 °C ; Humidity : 20% to 80%
White Balance	Auto, Manual, ATW, One Push, Indoor, Outdoor	Storage Conditions	Temperature : -20 °C to +60 °C ; Humidity: 20% to 95%
Optical Zoom	30X	IP Streaming	
Digital Zoom	1X	Resolution	4K 60fps
Total Zoom	30X	Network Video Compress Formats	H.264, H.265, MJPEG
Viewing Angles	DFOV: 69.2° (Wide) to 2.8° (Tele) HFOV: 62.3° (Wide) to 2.5° (Tele) VFOV: 37.3° (Wide) to 1.4° (Tele)	Network Audio Compress Formats	AAC-LC (48 K)
		Maximum Frame Rate	2160p 60fps
		Bit-Rate Control Modes	VBR, CBR (selectable)
		Range of Bit-Rate Setting	512 Kbps to 64 Mbps
Focal Length	f = 4.5 mm (Wide) to 135 mm (Tele)	Network Interface	10 / 100 / 1000 / 2500 Base-T
Aperture (Iris)	F = 1.8 (Wide) to 4.7 (Tele)	Multi-Stream Capability	10 4K 60fps: RTSP (x2), HDMI (x2), USB (x2), NDI® High Bandwidth (x1), & NDI® HX2 (x2) 1080p 60fps: 3G-SDI
Minimum Working Distance	0.1 m (Wide), 1.2 m (Tele)		
Pan / Tilt Angles	Pan: ±170°, Tilt: +90° / -30°	Network Protocols	IPv4, TCP, UDP, ARP, ICMP, IGMP, HTTP, HTTPS, DHCP, RTP / RTCP, RTSP, RTMP, SRT, HLS, NDI, LLD, VISCA over IP
Pan / Tilt Speed (Manual)	Pan: 0.1° to 100° / sec, Tilt: 0.1° to 100° / sec	NDI® High Bandwidth	Yes
Preset Speed	Pan: 200° / sec, Tilt : 200° / sec	NDI® HX2	Yes
Preset Positions	10 (IR), 256 (RS-232 / RS-422 / IP)	NDI® Genlock	N / A
Camera Control - Interface	RS-232 (DIN8), RS-422 (RJ45), IP, USB	NDI® Embedded Bridge	N / A
Camera Control - Protocols	VISCA (RS-232 / RS-422 / IP), PELCO-D & PELCO-P (RS-232 / RS-422), CGI (IP), USB, ONVIF	USB	
Image Processing	Noise Reduction (2D / 3D), Flip, Mirror, WDR, BLC	Connector	USB 3.2 Gen 1
Power Frequencies	50 Hz, 60 Hz	Video Format	MJPEG, YUY2
Wide Angle Camera		Audio Format	PCM
Image Sensor	1/2.8" 4K Low Lux CMOS	Maximum Video Resolution	2160p
Effective Picture Elements	8 Megapixels	USB Video Class (UVC)	UVC 1.1
Output Resolutions	4K/30	USB Audio Class (UAC)	UAC 1.0
Focal Length	2.22 mm	Web UI	
White Balance	Auto	Live Video Preview	Yes
Exposure	Auto	Camera PTZ Control	Pan, Tilt, Zoom, Focus, Preset Control
Viewing Angles	DFOV:113°, HFOV: 105°, VFOV: 71°	Camera/Image Adjustment	Exposure, White Balance, Picture
Pan / Tilt Angles	Tilt: +18° / -90°	Network Configuration	DHCP, IP Address, Gateway, Subnet Mask, DNS
AI Auto Tracking Functions		Software Tools	
Tracking Modes	Presenter Mode, Zone Mode, Hybrid Mode, Segment Mode	IP Search and Configuration Tool	Support Windows® 7 or later
Privacy Protection Mechanisms		PTZ Management	Support Windows® 7 or later
Protection Mode	Sleep Mode	PTZ Control Panel	Supports iOS & iPadOS® 9 or later
Audio		PTZ Link	Supports Windows® 7 or later, macOS® 10.14 or later
Channel	2ch Stereo	OBS Plugin for PTZ Cameras	Supports Windows® 8 or later, macOS® High Sierra v10.13 or later
Codec	AAC-LC (48K)	CaptureShare	Supports Windows® 7 or later, macOS® 10.14 or later
Sample Rates	48 KHz	Warranty	
Interface		Camera	5 Years
Video Outputs	3G-SDI, HDMI x 2, IP, USB	Accessories	1 Year
Audio Outputs	3G-SDI, HDMI x 2, IP, USB	<b>Package Contents</b> Camera, Remote Control, RS-232 In/Out Cable, Din 8 To D-Sub 9 Cable, Power Adapter, Power Cord, Cable Tie (x7), M2 x 4 mm Screw (x5), M3 x 6 mm Screw (x3), 1/4"-20L 6.5 mm Screw (x2), Cable Fixing Plate (x2), Ceiling Mount Bracket (x2), Drilling Paper, Quick Start Guide	
Audio Inputs	Mic in, Line in		
Optional Accessories		Aver CL01 PTZ Camera Controller, L-Type Wall Mount	

\* Specifications may vary depending on location and are subject to change without notice.

# Product Appearance

Front



Back



©2024 AVer Information Inc. All rights reserved.  
All brand names and logos are trademarks of their respective companies.

www.aver.com



Learn More

Distributor/Dealer

202409